

6 poles - 1000/1200 rpm

| | Description | | | | Mechanical specifications | | | | | | | | Electrical specifications | | | | | |
|-------------|-------------|------------------|------|-----|---------------------------|-------|-------------------|-------------|-------------|-------------|--------------|-------|---------------------------|-------|-------------------|----------------|--------------------------------|-------|
| | Code | Type | SIZE | SFA | Static moment* kgmm | | Centrifugal force | | | | Weight kg | | Max input power W | | Max. current A | | I _s /I _m | |
| | | | | | 50 Hz | 60 Hz | 50 Hz | 60 Hz | 50 Hz | 60 Hz | 50 Hz | 60 Hz | 50 Hz | 60 Hz | 400 V 50 Hz | 460 V 60 Hz | 50 Hz | 60 Hz |
| three-phase | 602283 | MVSS 10/40-S02 | 10 | • | 30.1 | 30.1 | 35 | 49 | 0.33 | 0.47 | 12.5 | 12.5 | 120 | 135 | 0.30 | 0.30 | 1.90 | 2.07 |
| | 602284 | MVSS 10/100-S02 | 10 | • | 84.2 | 84.2 | 94.3 | 136 | 0.93 | 1.33 | 15.8 | 15.8 | 120 | 135 | 0.30 | 0.30 | 1.90 | 2.07 |
| | 602285 | MVSS 10/200-S02 | 20 | • | 163 | 163 | 183 | 264 | 1.80 | 2.59 | 22.5 | 22.5 | 185 | 205 | 0.50 | 0.50 | 2.72 | 3.10 |
| | 602405 | MVSS 10/310-S08 | 30 | • | 286 | 209 | 321 | 338 | 3.15 | 3.32 | 32.0 | 30.7 | 350 | 380 | 0.72 | 0.68 | 2.63 | 2.79 |
| | 602287 | MVSS 10/550-S02 | 35 | • | 457 | 457 | 512 | 737 | 5.02 | 7.23 | 43.5 | 43.5 | 350 | 380 | 0.75 | 0.68 | 2.53 | 3.68 |
| | 602408 | MVSS 10/810-S08 | 40 | • | 723 | 561 | 809 | 905 | 7.84 | 8.88 | 54.0 | 52.6 | 680 | 760 | 1.40 | 1.35 | 2.79 | 3.33 |
| | 602409 | MVSS 10/1110-S08 | 50 | • | 1012 | 715 | 1132 | 1151 | 11.1 | 11.3 | 67.0 | 59.5 | 750 | 750 | 1.65 | 1.50 | 3.33 | 4.13 |
| | 602410 | MVSS 10/1400-S08 | 50 | • | 1274 | 904 | 1424 | 1485 | 14.0 | 14.5 | 78.0 | 71.0 | 950 | 1000 | 1.80 | 1.70 | 3.05 | 3.65 |
| | 602411 | MVSS 10/1610-S08 | 60 | • | 1464 | 962 | 1638 | 1549 | 16.1 | 15.2 | 94.0 | 83.0 | 1100 | 1300 | 2.20 | 2.20 | 4.21 | 4.05 |
| | 602412 | MVSS 10/2100-S08 | 60 | • | 1927 | 1318 | 2154 | 2102 | 21.1 | 20.6 | 105 | 93.0 | 1500 | 1700 | 3.00 | 2.90 | 4.50 | 4.20 |
| | 602293 | MVSS 10/2610-S02 | 70 | • | 2326 | 1706 | 2601 | 2747 | 25.5 | 26.9 | 130 | 116 | 1960 | 2100 | 4.10 | 3.75 | 5.35 | 5.60 |
| | 602294 | MVSS 10/3000-S02 | 70 | • | 2690 | 1940 | 3007 | 3124 | 29.5 | 30.6 | 145 | 130 | 2200 | 2400 | 4.50 | 4.30 | 4.35 | 4.81 |

8 poles - 750/900 rpm

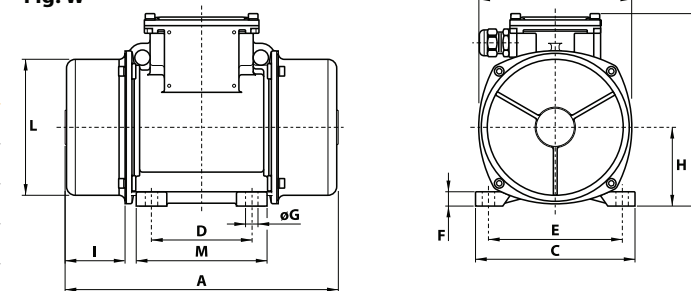
| | Description | | | | Mechanical specifications | | | | | | | | Electrical specifications | | | | | |
|-------------|-------------|-------------------|------|-----|---------------------------|-------|-------------------|-------------|-------------|-------------|--------------|-------|---------------------------|-------|-------------------|----------------|--------------------------------|-------|
| | Code | Type | SIZE | SFA | Static moment* kgmm | | Centrifugal force | | | | Weight kg | | Max input power W | | Max. current A | | I _s /I _m | |
| | | | | | 50 Hz | 60 Hz | 50 Hz | 60 Hz | 50 Hz | 60 Hz | 50 Hz | 60 Hz | 50 Hz | 60 Hz | 400 V 50 Hz | 460 V 60 Hz | 50 Hz | 60 Hz |
| three-phase | 602561 | MVSS 075/150-S02 | 20 | • | 163 | 163 | 104 | 149 | 1.02 | 1.46 | 22.5 | 22.5 | 230 | 250 | 0.85 | 0.76 | 2.13 | 2.11 |
| | 602617 | MVSS 075/250-S08 | 30 | • | 286 | 286 | 181 | 260 | 1.76 | 2.55 | 32.0 | 32.0 | 350 | 380 | 1.10 | 1.05 | 2.03 | 2.29 |
| | 602563 | MVSS 075/400-S02 | 35 | • | 457 | 457 | 288 | 415 | 2.83 | 4.07 | 43.5 | 43.5 | 280 | 300 | 0.60 | 0.58 | 1.73 | 2.50 |
| | 602620 | MVSS 075/660-S08 | 40 | • | 723 | 723 | 456 | 656 | 4.47 | 6.44 | 54.0 | 54.0 | 400 | 450 | 1.20 | 1.20 | 2.38 | 2.58 |
| | 602621 | MVSS 075/910-S08 | 50 | • | 1012 | 1012 | 637 | 917 | 6.25 | 9.00 | 67.0 | 67.0 | 400 | 500 | 1.40 | 1.30 | 2.38 | 2.85 |
| | 602622 | MVSS 075/1310-S08 | 60 | • | 1464 | 1464 | 922 | 1327 | 9.04 | 13.0 | 94.0 | 94.0 | 950 | 1100 | 2.20 | 2.20 | 2.63 | 3.41 |
| | 602567 | MVSS 075/2110-S02 | 70 | • | 2326 | 2326 | 1463 | 2107 | 14.4 | 20.7 | 130 | 130 | 1500 | 1790 | 4.10 | 4.20 | 3.55 | 2.95 |

* Working moment = 2 x static moment. I_s/I_m = ratio between start-up current and maximum current.

6 poles - 1000/1200 rpm

| | Type | Fig. | Dimensional specifications (mm) | | | | | | | | | | | | | Cable entry thread | |
|-------------|------------------|------|---------------------------------|-----|-----|-----|-----|-------|----|----|-------|------------------------------|-----|-----|-----|--------------------|--|
| | | | A | B | C | D | E | Holes | | F | H | I | L | M | N | | |
| | | | | | | | | øG | N° | | | | | | | | |
| three-phase | MVSS 10/40-S02 | W | 255 | 176 | 152 | 90 | 125 | 13 | 4 | 12 | 73 | 54 | 124 | 122 | 141 | M20x1.5 | |
| | MVSS 10/100-S02 | W | 295 | 176 | 152 | 90 | 125 | 13 | 4 | 12 | 73 | 74 | 124 | 122 | 141 | M20x1.5 | |
| | MVSS 10/200-S02 | W | 340 | 200 | 167 | 105 | 140 | 13 | 4 | 15 | 82.5 | 91 | 143 | 137 | 160 | M25x1.5 | |
| | MVSS 10/310-S08 | W | 378 | 205 | 205 | 120 | 170 | 17 | 4 | 17 | 93.5 | 98 | 168 | 160 | 182 | M25x1.5 | |
| | MVSS 10/550-S02 | W | 434 | 232 | 205 | 120 | 170 | 17 | 4 | 20 | 104.5 | 117 | 181 | 162 | 203 | M25x1.5 | |
| | MVSS 10/810-S08 | W | 490 (50Hz) 442 (60Hz) | 245 | 230 | 140 | 190 | 17 | 4 | 25 | 116 | 129 (50Hz) 105 (60Hz) | 201 | 180 | 225 | M25x1.5 | |
| | MVSS 10/1110-S08 | W | 560 | 245 | 230 | 140 | 190 | 17 | 4 | 25 | 116 | 164 | 201 | 180 | 225 | M25x1.5 | |
| | MVSS 10/1400-S08 | W | 560 | 245 | 230 | 140 | 190 | 17 | 4 | 25 | 116 | 164 | 201 | 180 | 225 | M25x1.5 | |
| | MVSS 10/1610-S08 | W | 601 (50Hz) 525 (60Hz) | 285 | 275 | 155 | 225 | 22 | 4 | 30 | 135 | 169 (50Hz) 131 (60Hz) | 231 | 205 | 253 | M25x1.5 | |
| | MVSS 10/2100-S08 | W | 601 | 285 | 275 | 155 | 225 | 22 | 4 | 30 | 135 | 169 | 231 | 205 | 253 | M25x1.5 | |
| | MVSS 10/2610-S02 | W | 657 (50Hz) 589 (60Hz) | 323 | 310 | 155 | 255 | 23.5 | 4 | 35 | 155 | 173.5 (50Hz) 139.5 (60Hz) | 269 | 215 | 295 | M25x1.5 | |
| | MVSS 10/3000-S02 | W | 705 | 323 | 310 | 155 | 255 | 23.5 | 4 | 35 | 155 | 197.5 | 269 | 215 | 295 | M25x1.5 | |

Fig. W



8 poles - 750/900 rpm

| | Type | Fig. | Dimensional specifications (mm) | | | | | | | | | | | | | Cable entry thread | |
|-------------|-------------------|------|---------------------------------|-----|-----|-----|-----|-------|----|----|-------|-------|-----|-----|-----|--------------------|--|
| | | | A | B | C | D | E | Holes | | F | H | I | L | M | N | | |
| | | | | | | | | øG | N° | | | | | | | | |
| three-phase | MVSS 075/150-S02 | W | 340 | 200 | 167 | 105 | 140 | 13 | 4 | 15 | 82.5 | 91 | 143 | 137 | 160 | M25x1.5 | |
| | MVSS 075/250-S08 | W | 378 | 205 | 205 | 120 | 170 | 17 | 4 | 17 | 93.5 | 98 | 168 | 160 | 182 | M25x1.5 | |
| | MVSS 075/400-S02 | W | 434 | 232 | 205 | 120 | 170 | 17 | 4 | 20 | 104.5 | 117 | 181 | 162 | 203 | M25x1.5 | |
| | MVSS 075/660-S08 | W | 490 | 245 | 230 | 140 | 190 | 17 | 4 | 25 | 116 | 129 | 201 | 180 | 225 | M25x1.5 | |
| | MVSS 075/910-S08 | W | 560 | 245 | 230 | 140 | 190 | 17 | 4 | 25 | 116 | 164 | 201 | 180 | 225 | M25x1.5 | |
| | MVSS 075/1310-S08 | W | 601 | 285 | 275 | 155 | 225 | 22 | 4 | 30 | 135 | 169 | 231 | 205 | 253 | M25x1.5 | |
| | MVSS 075/2110-S02 | W | 657 | 323 | 310 | 155 | 255 | 23.5 | 4 | 35 | 155 | 173.5 | 269 | 215 | 295 | M25x1.5 | |